

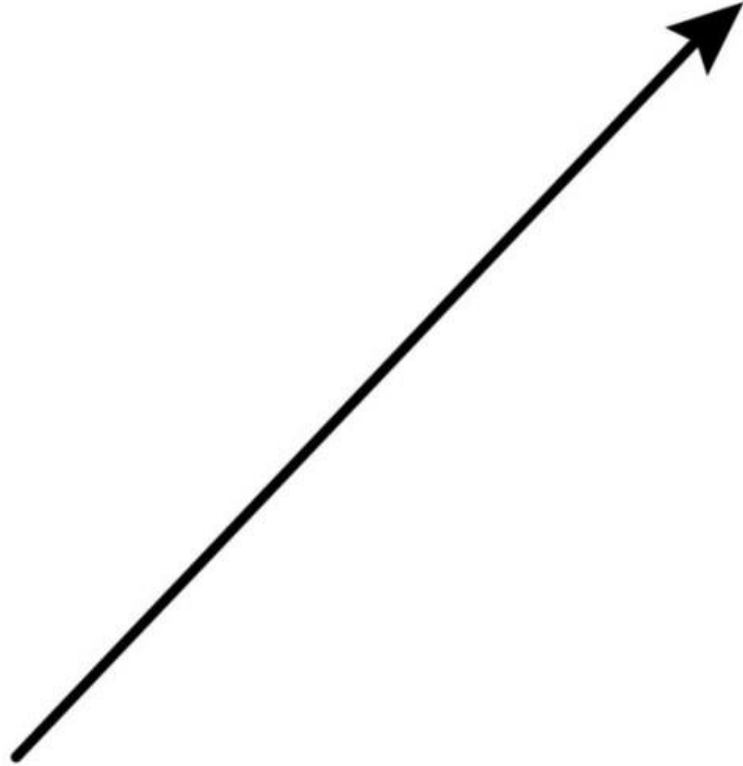
Exams and Intervention

Where are you? Where are you going? How are you going to get there?

When you have two exams in one day

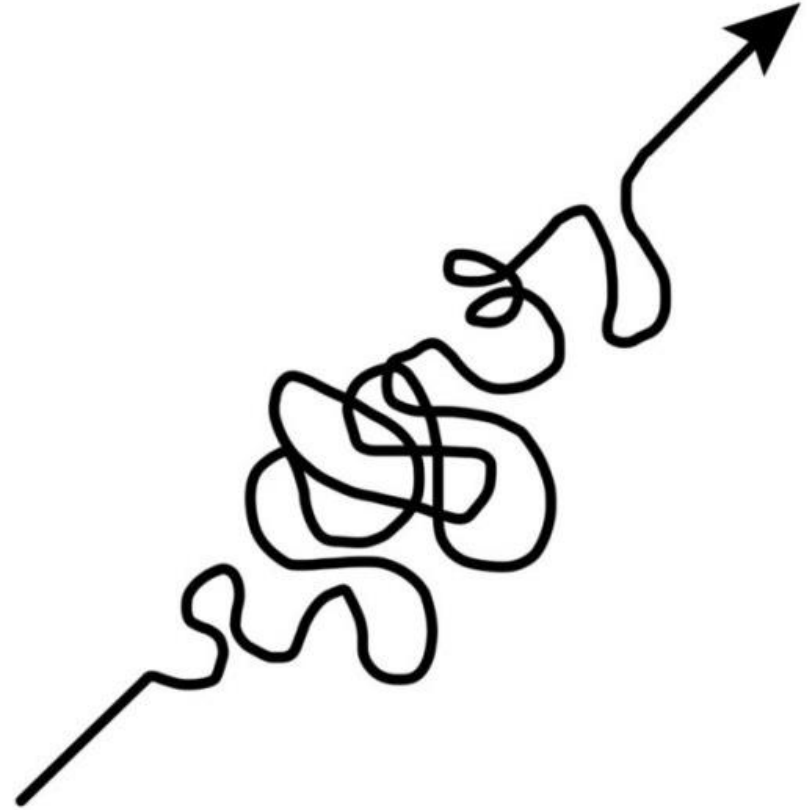


SUCCESS



what people think
it looks like

SUCCESS



what it really
looks like




Intervention
means
extra work for me!



Intervention
means extra work
for teachers, too!




Intervention is important


1. “Targeted”  means specific skills with specific students.
2. Our sole purpose is the best result for you.
3. It’s a team effort.

1. Log in to Go4Schools

Click on 'Progress'

 Overview

 Attendance

 Behaviour

 Inbox

 Progress

 Reports

 Timetable

Name, Your

2023 ▾ Year 11 (Current), 11JPR, House: Pioneer



Overview

 **Timetable**

08:50	09:50	History, 11D/Hi	Mrs K Milne	TE1
09:50	10:50	History, 11D/Hi	Mrs K Milne	TE1
11:10	12:10	Core PE, 11/PeD	Mr G Jenkins	SH

2. Scroll down to Grades

Click on 'Registration'

Grades

Compact view (main grades only) Broad view (all grades) Detailed (main grades plus marksheet grades)

Subject	MTG	Current
Business Studies, Mr I Simmons	Level 2 Pass	Level 1 Pass
Combined Science, Mr A Pelly, Mr N Ansell (+1)	4/3	4/3
Drama, Mrs L Kahr	4	5
English Language, Mrs E Merry	4	5+
English Literature, Mrs E Merry	4+	4+
History, Mrs K Milne	4+	3
Mathematics, Mr T Darby	5	3
PSHE, Mr I Simmons	-	-
Registration, Ms Price ⓘ	Full engagement	U
Sport Science, Miss K London	Level 2 Pass	Level 1 Distinction

3. Scroll down to Marksheets

Click on '_____ Intervention'

Marksheets

Marksheet	Percentage	Grade
Maths Revision Status	-	Targeted
Maths Intervention	-	-
English Language Revision Status	-	Independent
English Language Intervention	-	-
English Literature Revision Status	-	Targeted
English Literature Intervention	-	-
Biology Revision Status	-	-
Biology Intervention	-	-

3. You've arrived!

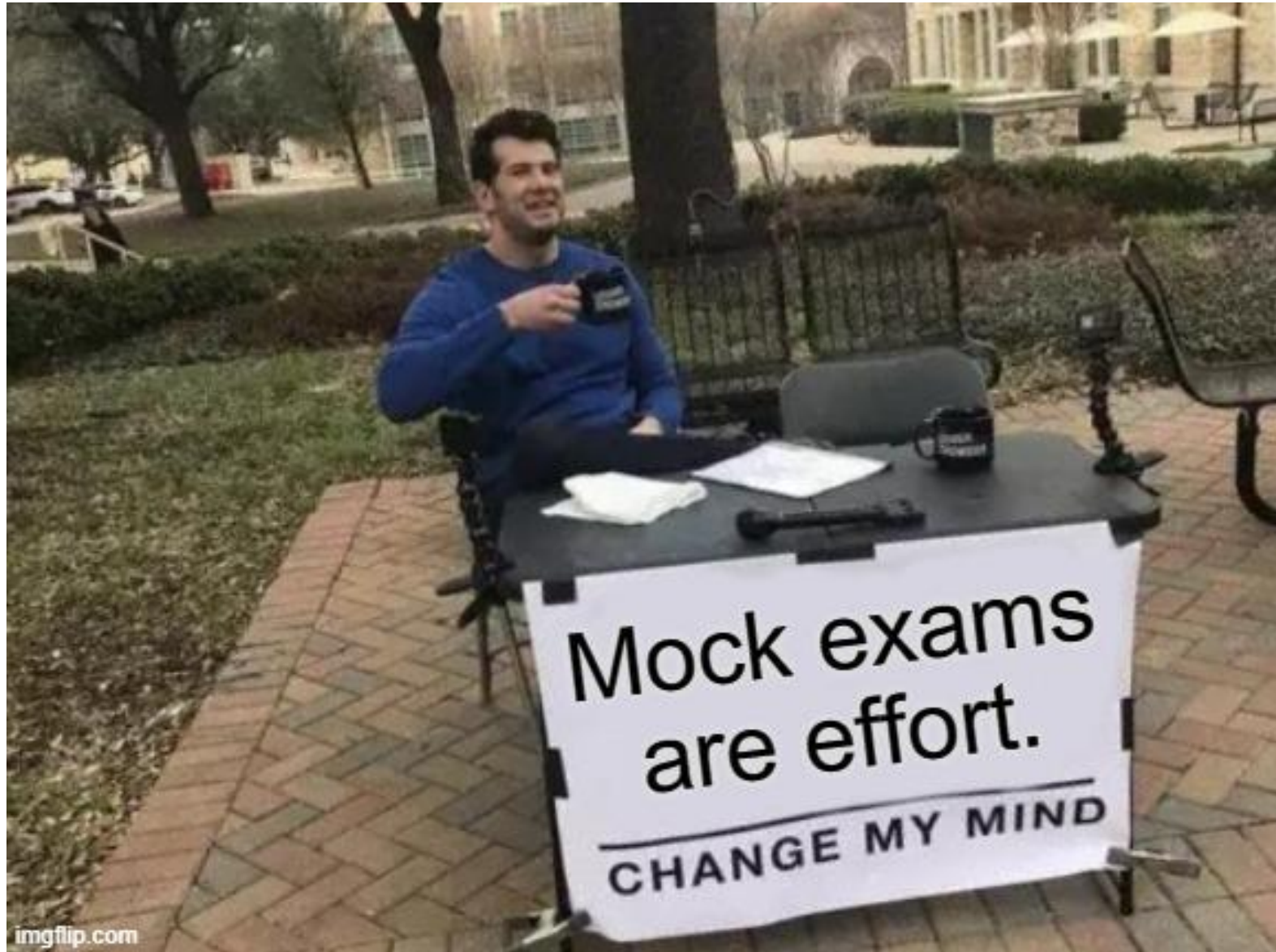
Marksheet summary

View marksheet in detail ▾

Maths Intervention

This marksheet contributes 4% to the Current grade.

Overall	Percentage
Overall attainment for this set of assessments based on the best assessment	100%
Assessment	
Note: Targeted	-
Session/Task 1	100 %
Session/Task 2	-
Session/Task 3	-
Session/Task 4	-
Session/Task 5	-
Note: After school sessions (every Wed 3:05-4:00pm in BS)	-
Comment:	-



Yes, another round of mock exams

Why?

- At this stage, your teachers are constantly working to prepare you for your external exams. These formal assessments help us plan your future learning opportunities.
- More exam experience helps you feel more comfortable, and you can practice practical exam skills like planning and time management.

What's the same?

- Fair and accurate assessment
- Actual exam materials
- Marked to exam board standards
- Grades assigned to your performance
- *Some* exams in the hall under strict exam conditions

What's different?

- Low key
- *Most* exams in classrooms, within your timetabled lessons
- *Most* exams will be shorter
- Less intense (spread out, rarely two on the same day)
- Lessons carry on as normal

YEAR 11 Spring Exams 2023

All exams in classrooms except those on 1st & 2nd March.

(Access Arrangements – Students with extra time will work in classrooms. Others will be in Rooms 19 & 20. WP Users sit Maths exams in classrooms)

Day and date	Period 1 8.50 – 9.50	Period 2 9.50 – 10.50	Break 10.50 – 11.10	Period 3 11.10 – 12.10	Period 4 12.10 – 1.10	Lunch 1.10 – 2.00	Period 5 2.00 – 3.00
Monday 27 th February Week 2		English Literature 1 45 mins		Maths 1 45 mins	Combined Science Biology 1 40 mins		
Tuesday 28 th February	Music 1 hour 30 mins DT 1 hour 30 mins MFL Listening option D			Chemistry 1 45 mins			
Wednesday 1 st March Hall Exams	History 1 hour 30 mins			MFL Reading Higher 1 hour Foundation 45 mins			Food 45 mins
Thursday 2 nd March Hall Exams	Geography 1 hour 30 mins			MFL Writing Higher 1 hour 15 mins Foundation 1 hour			Drama 45 mins
Friday 3 rd March	Dance 1 hour 30 mins Statistics 1 hour 30 mins MFL Listening option C						Chemistry 2 - 45 mins CS Biology 2 - 40 mins

Note: There are two days of exams in the sports hall. This is to accommodate larger option subjects.

Monday 6th March Week 1				RS 1 hour, PE 1 hour Computing 1 hour 30 mins MFL Listening option B		English Literature 2 45 mins
Tuesday 7th March	Engineering 1 hour MFL Listening option A				Biology 1 - 45 mins CS Physics 1 - 40 mins	
Wednesday 8th March	English Language 1hour 45 mins					CS Physics 2 40 mins
Thursday 9th March		Maths 2 45 mins		Biology 2 45 mins		
Friday 10th March		Physics 1 - 45 mins CS Chemistry 1 - 40 mins			FSMQ 45 mins	

Monday 13th March Food practical						
Tuesday 14th March Food practical						
Wednesday 15th March Food practical						
Thursday 16th March Food practical						
Friday 17th March	Dance Practical				Physics 2 - 45 mins CS Chemistry 2 - 40 mins	

Monday 20th March	Maths 3 45 mins					
-------------------------------------	---------------------------	--	--	--	--	--

EXAMS ARE COMING



WILL YOU BE READY?

YEAR 11 GCSE Exams 2023

Day and date	Period 1 8.50 – 9.50	Period 2 9.50 – 10.50	Break 10.50 – 11.10	Period 3 11.10 – 12.10	Period 4/Early lunch 12.10 – 1.10	Lunch 1.10 – 2.00	Period 5 2.00 – 3.00
Monday 15 th May	RS 1 2 hours <u>8.50 – 10.50</u>				Drama 1 hour 30 mins 12.45 – 2.15		
Tuesday 16 th May	Biology 1 Triple 1 hour 45 mins <u>8.50 – 10.35</u> Combined Science 1 hour 15 mins 8.50 – 10.05						
Wednesday 17 th May	English Literature 1 1 hour 45 mins 8.50 – 10.35				PE 1 1 hour 12.45 – 1.45		
Thursday 18 th May	History 1 1 hour 15 mins 8.50 – 10.05						
Friday 19 th May	Maths 1 1 hour 30 mins 8.50 – 10.20				Computer Science 2 hours 12.45 – 1.45		
Monday 22 nd May	Chemistry 1 Triple 1 hour 45 mins <u>8.50 – 10.35</u> Combined Science 1 hour 15 mins 8.50 – 10.05				Geography 1 1 hour 15 mins 12.45 – 2.00		
Tuesday 23 rd May	French Reading H 1 hour 8.50 – 9.50 F 45 mins 8.50 – 9.35	French Listening F 35 mins 10.10 – 10.45		French Listening H 45 mins 11.00 – 11.45	RS 2 2 hours 12.45 – 2.45		
Wednesday 24 th May	English Literature 1 2 hours 15 mins 8.50 – 11.05						
Thursday 25 th May	Physics 1 Triple 1 hour 45 mins <u>8.50 – 10.35</u> Combined Science 1 hour 15 mins 8.50 – 10.05				Computer Science 1 hour 45 mins 12.45 – 2.30		
Friday 26 th May							

Monday 5th June	English Language 1 1 hour 45 mins 8.50 – 10.35				French Writing H 1 hour 15 mins 12.45 – 1.45 F 1 hour 12.45 – 1.45
Tuesday 6th June	Spanish Reading H 1 hour 8.50 – 9.50 F 45 mins 8.50 – 9.35	Spanish Listening F 35 mins 10.10 – 10.45	Spanish Listening H 45 mins 11.00 – 11.45		
Wednesday 7th June	Maths 2 1 hour 30 mins 8.50 – 10.20				History 2 1 hour 45 mins 12.45 – 2.30
Thursday 8th June	PE 2 1 hour 8.50 – 9.50				Contingency afternoon
Friday 9th June	Geography 2 1 hour 15 mins 8.50 – 10.05				Biology 2 Triple 1 hour 45 mins 12.45 – 2.30 Combined Science 1 hour 15 mins 12.45 – 2.00

→

Monday 12th June	English Language 2 1 hour 45 mins 8.50 – 10.35				Statistics 1 1 hour 30 mins 12.45 – 2.15 Japanese Reading 1 hour 5 mins 12.45 – 1.50 Japanese Listening 45 mins 2.10 – 2.55
Tuesday 13th June	Chemistry 2 Triple 1 hour 45 mins <u>8.50 – 10.35</u> Combined Science 1 hour 15 mins 8.50 – 10.05				Spanish Writing H 1 hour 15 mins 12.45 – 2.00 F 1 hour 12.45 – 1.45
Wednesday 14th June	Maths 3 1 hour 30 mins 8.50 – 10.20				Music Listening 1 hour 30 mins 12.45 – 2.15
Thursday 15th June	History 3 1 hour 20 mins 8.50 – 10.10				Contingency afternoon
Friday 16th June	Physics 2 Triple 1 hour 45 mins <u>8.50 – 10.35</u> Combined Science 1 hour 15 mins 8.50 – 10.05				Geography 3 1 hour 30 mins 12.45 – 2.15

Monday 19th June	DT 2 hours 8.50 – 10.50			Statistics 2 1 hour 30 mins 12.45 – 2.15 Japanese Writing 1 hour 25 mins 12.45 – 2.10
Tuesday 20th June	Dance 1 hr 30 mins Food & Nutrition 1 hr 30 mins 8.50 – 10.20 Engineering 2 hours 8.50 – 10.50			Clash exams from morning session
Wednesday 21st June				
Thursday 22nd June				
Friday 23rd June				FSMQ 2 hours 12.45 – 2.45
Thursday 28th June	Contingency Day			

Will you be ready?



Timeline:

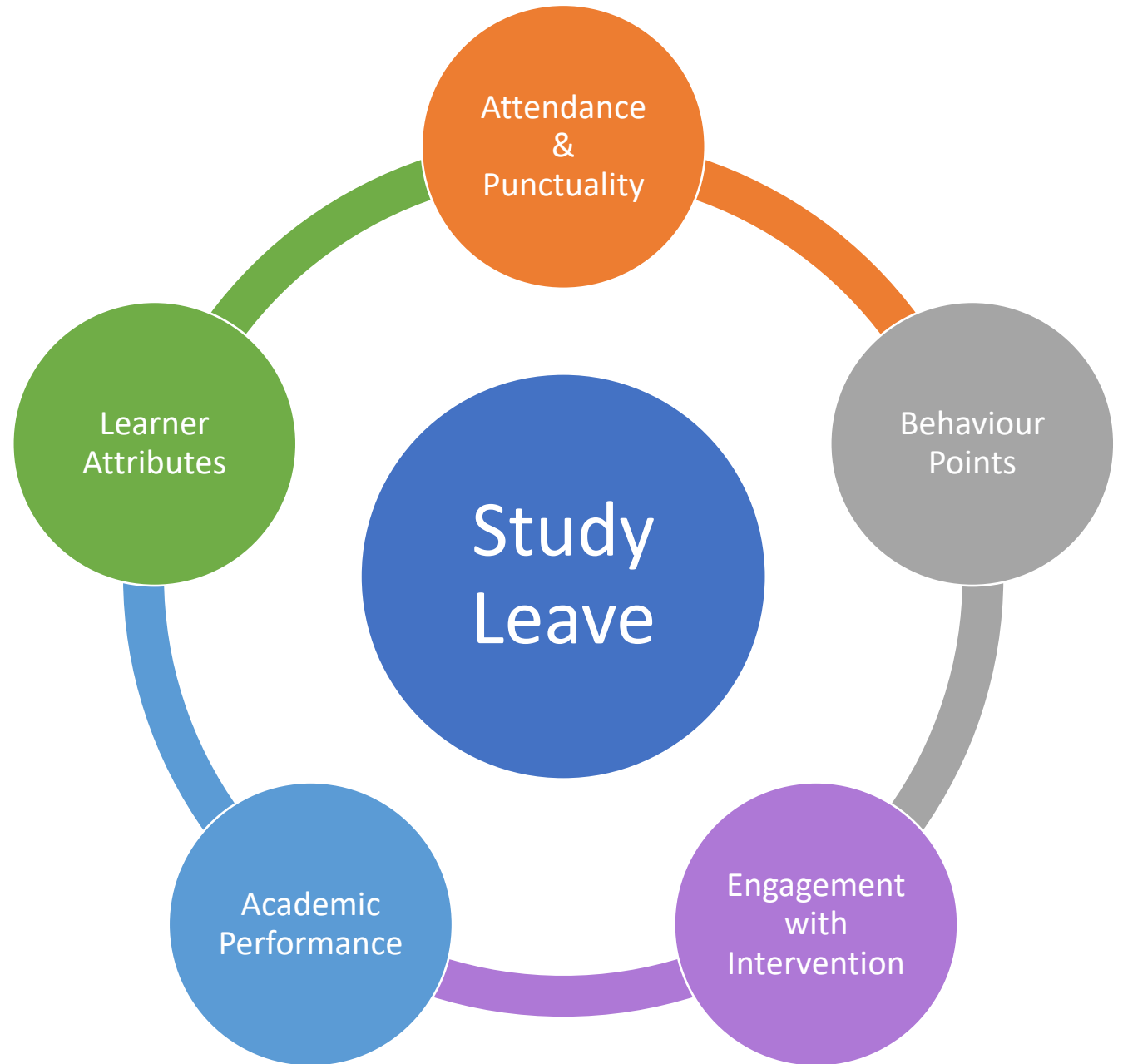
- Study Skills and Well-being Event**
 All students and parents invited
 Thursday 26th January
- Leavers Day & Study Leave**
 For some students
 Date: TBD
- Prom**
 Saturday 1st July (am I right?)

	26-Dec		Christmas
Spring A	02-Jan	1	Intervention Five weeks
	09-Jan	2	
	16-Jan	1	
	23-Jan	2	
	30-Jan	1	
	06-Feb	2	
	13-Feb		Half-term
Spring B	20-Feb	1	Mock Exams Series 2 Three weeks
	27-Feb	2	
	06-Mar	1	
	13-Mar	2	
	20-Mar	1	
	27-Mar	2	Snapshot Report 3
	03-Apr		Easter
Summer A	17-Apr	1	Intervention Four weeks
	24-Apr	2	
	01-May	1	
	08-May	2	
	15-May	1	GCSE Exams
	22-May	2	
	29-May		Half-term
Summer B	05-Jun	0	GCSE Exams
	12-Jun	1	
	19-Jun	2	
	26-Jun	1	Prom
	03-Jul	2	A long, relaxing summer break...
	10-Jul	1	
	17-Jul	2	

Study Leave...

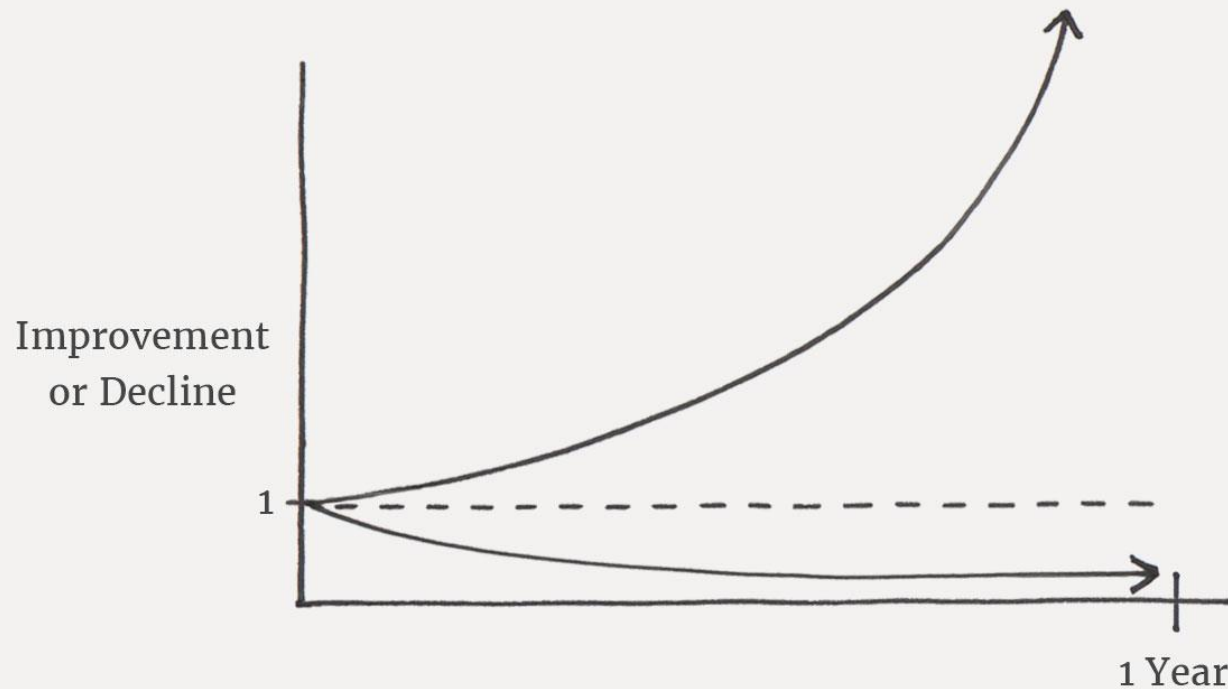
... **is not** an automatic entitlement for all students,

... **is** for those who are ambitious, responsible, independent, and reflective.



The Power of Tiny Gains

1% better every day $1.01^{365} = 37.78$
1% worse every day $0.99^{365} = 0.03$



Do the small things.

- Arrive on time.
- Have the equipment you need for each lesson.
- Organise your week and make note of the days and times for intervention.
- Aim to ask a meaningful question every lesson.
- Spent an extra 10 minutes on a homework task.

It all adds up!